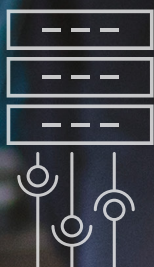


IBM TRAINING AND CERTIFICATION

www.globalknowledge.net/IBM



Global Knowledge®



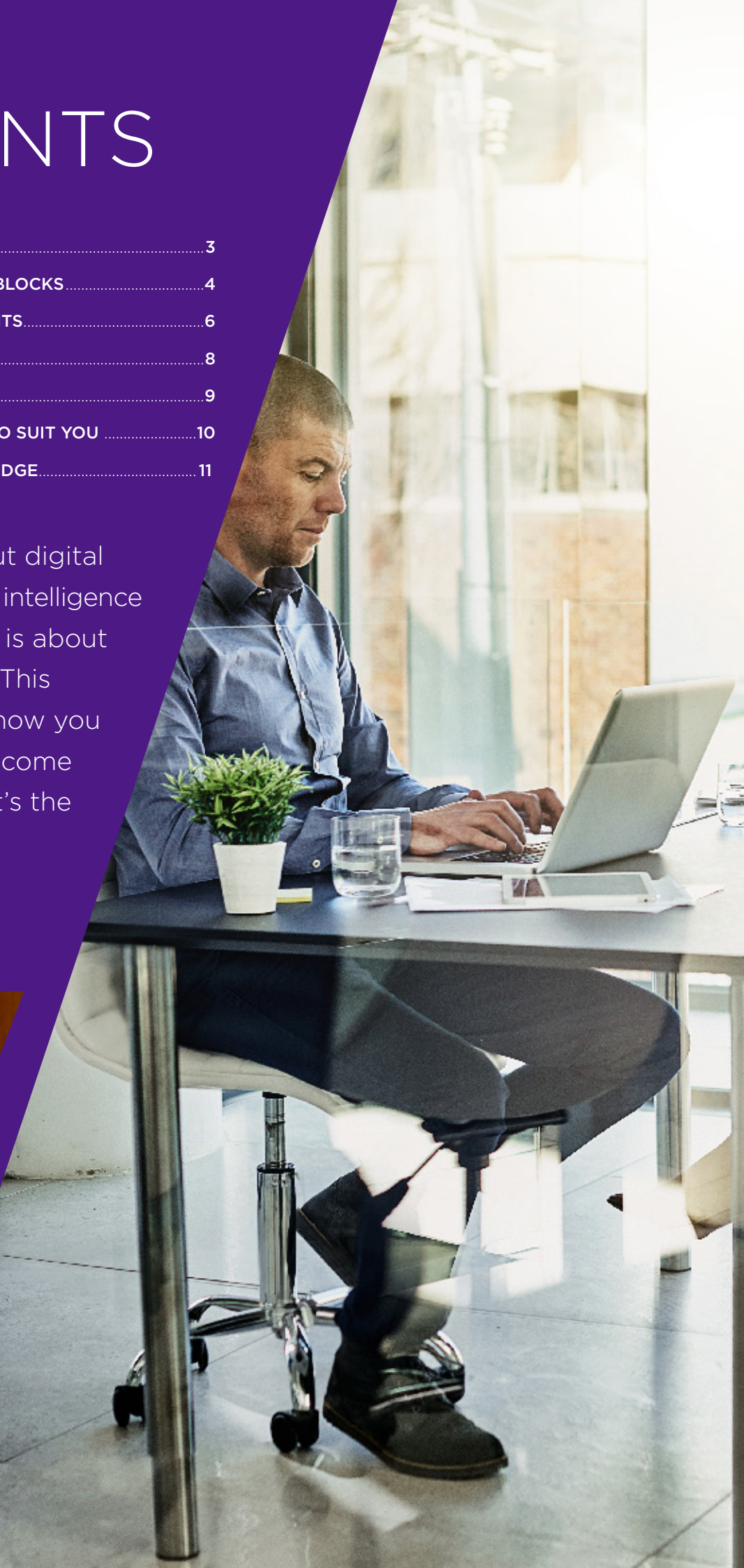
Global Training Provider


CONTENTS

| | |
|--|----|
| INTRODUCTION | 3 |
| YOUR OPERATIONAL BUILDING BLOCKS | 4 |
| KNOWLEDGE AREA FOCAL POINTS | 6 |
| CERTIFICATION | 8 |
| WHAT IS..... | 9 |
| A DELIVERY FORMAT METHOD TO SUIT YOU | 10 |
| WHY CHOOSE GLOBAL KNOWLEDGE..... | 11 |

“Digital is the wires, but digital intelligence, or artificial intelligence as some people call it, is about much more than that. This next decade is about how you combine those and become a cognitive business. It’s the dawn of a new era.”

- Virginia M. (Ginni) Rometty ,
chairman, president and chief
executive officer, IBM





INTRODUCTION

‘A CONSTANT STATE OF INNOVATION’

Top level performance requires insight. Up-to-date insight into all business information relevant to you, to enable you to make the right decision at the right time. But do you have the right tools at your disposal to do so? The world is ever more dynamic and increasingly dependent on technology. To keep up you've got to keep on learning. Having the right knowledge and skills is crucial to achieving and maintaining your competitive edge.

IBM Global Training Provider

Global Knowledge is an IBM Global Training Provider. This means the education and training we provide you with is, without exception, authorised by IBM and makes use of IBM's official training course materials.

Through serving customers across the globe, Global Knowledge has acquired a unique position in developing and improving companies' IBM-specific skills. As such we provide IBM training in over thirty countries across the Americas, Asia, Europe, the Middle East and Africa. Moreover, Global Knowledge is the only training partner to provide a comprehensive IBM training programme in Europe. We operate a global network comprising over sixty partners, each of which are market leaders in technical and corporate training for their region. This means that we, together with our partners, provide training in over one hundred countries, through a virtual classroom.

We offer training on IBM software and systems in various forms. You can sign up for teacher-led training sessions through our public schedule, train through e-learning in a virtual environment with real-time online classroom access, or use a combination of these. We teach using hands-on practice labs, featuring current, real-world case studies, giving you the ideal preparation for the IBM certification exams as well as for your actual work. We can also provide you with custom training solutions, for instance to train your entire team or organisation, in-house or using digital materials.



IBM ANALYTICS

Successful organisations are particularly those who have access to key data – be it their own or data of others, random or structured big data, public or confidential corporate data. These companies use cognitive technologies to filter data to gain useful insights, and this gives them competitive advantages.

Global Knowledge offers several training courses to help you optimise your use of data streams within your organisation, teaching you how to gain news insights using IBM Analytics solutions. Our expert teachers look beyond the here and now, using a variety of real-life case studies and exercises to prepare you for the expected growth of business-critical information in terms of volume and speed. That way you can be sure you'll be able to maximise your use of IBM technology for big data and analytics.

Takeaways from IBM training include being able to make better business decisions using IBM Cognos (the new Cognos Analytics v11 in particular), performing analyses and creating models with SPSS, organising information using Master Data Management (MDM) and quickly finding what you are looking for with BigInsights. Moreover, we offer a range of courses to expand your database knowledge, such as Databases (DB2, IMS, Informix), Infosphere DataStage and Quality Stage, and to organise your data using FileNet.

IBM CLOUD



IBM's cloud-based application development platform Bluemix is the largest Cloud Foundry Deployment platform in the world, featuring over a hundred services, one of them being Watson API. The platform and its accompanying services are available in more than 150 countries, with thousands of new users joining each week. Companies across many countries use IBM Cloud IaaS and pods to secure their hybrid enterprise clouds.

Global Knowledge provides the full range of training you and your team need to maximise your utilisation of IBM Cloud technologies. For instance, you will be able to learn how to use Bluemix infrastructure (Softlayer) to further develop your data center, how to organise your services provisioning and management using the SmartCloud suite, and how to quickly build powerful applications using IBM Bluemix.

YOUR OPERATIONAL BUILDING BLOCKS

IBM SECURITY

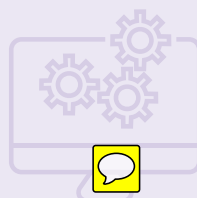
As cyber-attacks diversify and intensify, an educated workforce is your organisation's most powerful opportunity to progress beyond basic security fundamentals and get ahead of emerging threats minimise vulnerability with Rational AppScan, secure confidential data with InfoSphere Optim, detect anomalies with QRadar SIEM, regulate endpoint compliance with BigFix (ex Tivoli Endpoint Manager) and more.

IBM MIDDLEWARE

Middleware is not usually the most visible of your systems' elements, and yet it serves as the foundation for digital transformation. For large-scale initiatives such as the hybrid cloud, analytics and enterprise mobility, middleware is, after all, essential. Middleware skills should therefore rank high on the list of priorities of every forward-thinking organisation. Global Knowledge can train you on solutions across the full breadth of the IBM Systems Middleware portfolio, equipping your professionals with the skills to set up a dynamic application structure, streamline the IT service management and make an organisational flexible.

IBM SYSTEMS

Your IBM Systems are the backbone to your environment. So how can you configure them to swiftly adapt to ever-changing business requirements? A responsive IBM Systems infrastructure is vital to your organisation. Our training will provide you with all the hands-on know-how for deployment, management and performance improvement, ready to put into use in a rapidly changing organisation. Global Knowledge has training and certification programmes to suit everyone within your infrastructure team, from experienced administrators down to entry-level users, including (but not limited to) Power Systems p and i, System z, the Spectrum Storage product.





KNOWLEDGE AREA FOCAL POINTS

IBM offers a broad range of education – anything from hardware training to personal development courses – and yet all of their programmes share one common denominator: like IBM solutions, they focus on Big Data, Cognitive Analytics and Cloud. This focus is divided into a number of knowledge areas, each of which features various training courses in different forms and includes the option for participants to obtain a certification upon completion.

Big Data

Data integration concerns information technology as well as business intelligence streams originating from various data sources. Combining these puts relevant and valuable information at your disposal. IBM Data Integration solutions help you to understand, transform and monitor these data streams. Global Knowledge offers big data training courses to help you optimise your data utilisation. These include InfoSphere Information Server, InfoSphere QualityStage, InfoSphere DataStage and IBM BigInsights.

IBM Analytics

Cognos Analytics features an array of options, for instance to discover and examine data, create dashboards and run professional reports. Global Knowledge offers a choice of analytics training courses, teaching you optimal data analysis and visualisation. These include Cognos Reports, meta data modelling, Planning Analytics (formerly TM1).

IBM Cloud

Bluemix Infrastructure (SoftLayer) enables seamless integration of your on-site infrastructure with your private, public and hybrid cloud, into a secure, flexible and scalable infrastructure with a clear, well-organised dashboard. Global Knowledge offers a range of courses to help you organise and optimise a flexible cloud environment. These include Bluemix, MobileFirst, OpenStack and PowerVC.

IBM Security

Network, Identity and Assets management and protection can help secure your IT with high efficiency while Guardium will overlook your data thoroughly.

IBM Middleware

WebSphere Application Server (WAS) lets you manage your business applications dynamically. This solution incorporates the comprehensive middleware infrastructure needed to create, develop, manage and monitor business web applications. Global Knowledge's choice of training courses to manage your middleware layer includes WebSphere, Integration Bus, API Connect, ODM, BPM, CICS and DataPower.



CERTIFICATION



The IBM Professional Certification programme provides IT professionals with tangible means of demonstrating their knowledge and skills regarding the latest IBM technologies and solutions.

Pathways to certification under IBM's Professional Certification programme are primarily aimed at IBM technology and solutions that are relevant to IBM customers, IBM Business Partners and IBM employees. These certifications provide IT professionals with proof of their proficiency in a specific field or in a particular technology.

IBM offers the opportunity to obtain certifications in relation to Products, Solutions and New Technology. The IBM Professional Certification programme comprises of two types of tests, with circa 350 certifications available, proposed by job role or product.

- **Mastery test (Sales/Technical)**
- **Certification (Entry/Intermediate/Advanced)**

Students who would like to obtain a certification need to be at least 18 years of age and have relevant professional experience. IBM's Professional Certification Programme is linked to IBM's Open Badge programme, which means IT professionals who pass a test in a specific field of IT could then be awarded an appropriate badge.

IBM PARTNERWORLD

IBM PartnerWorld is IBM's partner programme, endorsing business partners as successful suppliers of IBM products and services and as such securing IBM's strong relationship with its Business Partners. IBM operates four partnership levels:

- Registered
- Silver
- Gold
- Platinum

As an IBM Business Partner you will have access to all resources required to market IBM-based solutions, enabling you to generate higher margins. You can achieve a higher level by obtaining points; you can earn those for instance by demonstrating your skills through training and certification. We are happy to assist you if you need any advice on this topic.





WHAT IS...

WATSON

IBM Watson is capable of understanding and processing any kind of data, of engaging in natural communication with people, and of learning and large-scale reasoning. Watson can even analyse and interpret random data such as text, images, audio and video for you, and can give you advice and recommendations based on your personality, tone of voice and emotions as a user. This type of machine learning is exceptionally well suited to improving your apps and systems through user knowledge and expertise.

COGNOS

IBM Cognos Analytics is a smart, self-service solution for gathering applied insights quickly and reliably. Its intuitive interface allows users to put together and personalise dashboards and reports without needing technical support. The technical support team, meanwhile, is presented with a proven, scalable solution that can run on-premise as well as in the cloud.

INFRASTRUCTURE

IBM Bluemix Infrastructure (SoftLayer) is a Platform-as-a-Service (PaaS) in the cloud that supports a variety of services, such as integrated DevOps services to build, run, develop and manage applications in the cloud.

Bluemix Infrastructure (SoftLayer) was developed using Cloud Foundry open technology and runs on a SoftLayer infrastructure.

Bluemix Infrastructure (SoftLayer) supports all manner of programming languages, like Java, Node.js, Go, PHP, Swift, Python, Ruby Sinatra, and Ruby on Rails, and can be expanded using buildpacks.

WEBSPHERE

IBM WebSphere is a set of IBM Java-based tools that users can utilise to create and manage intricate websites. The WebSphere Application Server (WAS) helps users establish the right connection between website users and Java applications and servlets. Servlets are programs written in Java that are installed on the server rather than on the user's computer. Servlets can replace the traditional Common Gateway Interface (CGI) scripts and enhance speed as it means all requests then run on the same server.

INFOSPHERE

Your business can use InfoSphere Information Server's key capabilities to implement a complete data integration strategy. The core of these capabilities is a common meta data repository that stores imported metadata, project configurations, reports, and results for all components of InfoSphere Information Server.



A DELIVERY FORMAT METHOD TO SUIT YOU



These days, training tends to be customised to the participant's personal situation. Global Knowledge leads the way in this development. Besides traditional classroom-based teaching we offer a variety of online and virtual training types, such as a comprehensive package of interactive IBM Web-Based courses – perfect for professionals who prefer IBM Self-Study training, allowing you to study at your own pace. In addition to this we offer the more proactive Self-Paced Virtual Class (SPVC) for which we use practical exercises involving remote access to actual systems.

Classroom

Classroom-based training is conducted by an instructor who actively engages with participants, explains the subject matter, uses examples, gives out assignments and exercises and responds to questions. A substantial number of these sessions can be attended virtually as well



SPVC

IBM's Self-Paced Virtual Class (SPVC) is a flexible form of training, whereby students take part as and when it suits them, using an online portal. SPVC courses require from 4 to 40 study hours. Students have access to online assignments, multimedia presentations and demos.



Private Company Training

Would you like training for an entire team or department? You can decide where, when and how you would like this to happen. For instance, you can opt to have the training on your own premises or at a location of your choice, and have the training customised to your needs.



Learning resources are broken down into in clearly arranged modules, making it easy combine studying with work and personal commitments. SPVC training covers the exact same content as classroom-based courses.

The experience with our digital materials such as SPVC and Web Based Training can be enhanced by one or two days of instructor-led coaching.

Web Based Training (WBT)

This type of training refers to participants accessing simple and short course materials which are usually downloaded.





WHY CHOOSE GLOBAL KNOWLEDGE?

Fill the skills gap

Hundreds of courses are at your fingertips for training on everything from data analysis, cyber security and cloud computing to leadership and project management.

Partnering with technology leaders

Global Knowledge partners with the world's technology leaders, including: Cisco, Citrix, Microsoft, IBM, Amazon Web Services and VMware to ensure that we're not only delivering authorised training content, but adhere to their quality commitments. Added to that, we work together with leading testing providers, such as Pearson VUE and Exin, enabling us to test and verify your acquired knowledge on our programmes.

Flexible

Choose from our convenient delivery formats to get the training you and your team need, where, when and how you want it. Whether it's in a classroom or online, public or private, synchronous or asynchronous, Global Knowledge has a delivery option to meet your needs and preferences. Our course delivery formats enable you to balance your schedule while gaining real-world, relevant skills in a stimulating environment.

Gain practical, hands-on experience

Practice your skills and learn how to resolve real-world IT or business issues in our live lab environments.

Authorised training providers

Global Knowledge provides official authorised training courses and study programmes taught by certified instructors. This ensures that courses are taught at a consistent level, and that you comply with the strict requirements set by vendors. If you are planning to take an exam, you will be optimally prepared with the use of official courseware. Global Knowledge guarantees the highest level for a training course or study programme.

No unexpected charges

At Global Knowledge, fees are always clear. You know exactly what you will be paying from the start. Global Knowledge does not charge extra for courseware packages or use of the location.

Guaranteed dates

Book your IT Training or Business Skills course, knowing your class will run, with the largest schedule of guaranteed dates in the industry.



Global Knowledge®

EMEA HQ - UK:

Global Knowledge
Thames Valley Training Centre
Mulberry Business Park,
Fishponds Rd, Wokingham,
Berkshire, RG41 2GY
T +44 (0) 1189 777700
F +44 (0) 1189 777767
E info@globalknowledge.net

Belgium:

Global Knowledge
Zandvoortstraat 1
2800 Mechelen
T +32 15 27 65 35
F +32 15 20 49 50
E info@globalknowledge.be

Denmark:

Global Knowledge
Stamholmen 110,
2650 Hvidovre
T 44 88 18 00
F 44 88 18 42
E training@globalknowledge.dk

Dubai:

Global Knowledge
Dubai Knowledge Village
Block 2A, first floor, Office F-68,
PO Box 500716
T +971 4 446 4987/72
F +971 4 366 4554
E training@globalknowledge.ae

Egypt:

Global Knowledge
16 Moustafa Refaat St.
Block 1137,
Sheraton Heliopolis,
Cairo
T +20 2 2269 1982
F +20 2 2269 2041
E training@globalknowledge.com.eg

France:

 Global Knowledge
Avenue Albert 1er
92500 Rueil-Malmaison
T +33 (0)1 78 15 34 00
F +33 (0)1 78 15 33 90
E info@globalknowledge.fr

Ireland:

Global Knowledge
3rd Floor Jervis House
Millennium Walkway
Dublin 1
T +353 (0)1 814 8200
F +353 (0)1 814 8210
E info@globalknowledge.ie

Netherlands:

Global Knowledge
Ipenhoeve 5
3438 MR
Nieuwegein
T +31 (0)30 60 89 311
F +31 (0)30 60 61 652
E info@globalknowledge.nl

Norway:

Global Knowledge
Grenseveien 90,
N-0663 Oslo,
Postboks 6256 Etterstad,
N-0603 Oslo
T +47 2295 6600
F +47 22 95 6601
E info@globalknowledge.no

Qatar:

Global Knowledge
Burj Doha, ServCorp Business
Center, Corniche Street,
West Bay, Office No. 30, Level 21
Doha, Qatar
T +974 4031 6639
F +974 4031 6782
E training@globalknowledge.qa

Saudi Arabia:

Global Knowledge
Al Oruba street, Bldg. #393,
Al Wurud Area, Riyadh 3140.
P.O. Box 17969 Riyadh 11494
T +966 92000 9278
F +966 92000 9278 Ext: 3323
E training@globalknowledge.com.sa

Spain:

Global Knowledge
Edificio Indocentro
Calle de la Retama 7, 6a planta
28045 - Madrid
T +34 91 425 06 60
F +34 91 579 55 95
E info.cursos@globalknowledge.es

Sweden:

Addskills/Cornerstone/Global Knowledge
NOD-huset
Borgarfjordsgatan 4
164 55 Kista
T +46 8 445 16 60
F +46 8 28 14 07
E info@globalknowledge.se

UK:

Global Knowledge
Thames Valley Training Centre
Mulberry Business Park,
Fishponds Rd,
Wokingham,
Berkshire,
RG41 2GY
T +44 (0)1189 123456
F +44 (0)1189 195109
E info@globalknowledge.co.uk

Copyright © 2017 Global Knowledge Training LLC. All rights reserved.

Global Knowledge reserves the right to change pricing, registration terms and conditions, course content, products or program, course events or cancel a course at any time without notice or liability. Whilst every effort has been made to ensure the accuracy of the information contained within the publication Global Knowledge will not accept responsibility for any inadvertent errors.

For complete terms and conditions, visit www.globalknowledge.net

Global Knowledge and the Global Knowledge logo are trademarks of Global Knowledge Training LLC. All other trademarks mentioned are the property of their respective owners.

www.globalknowledge.net